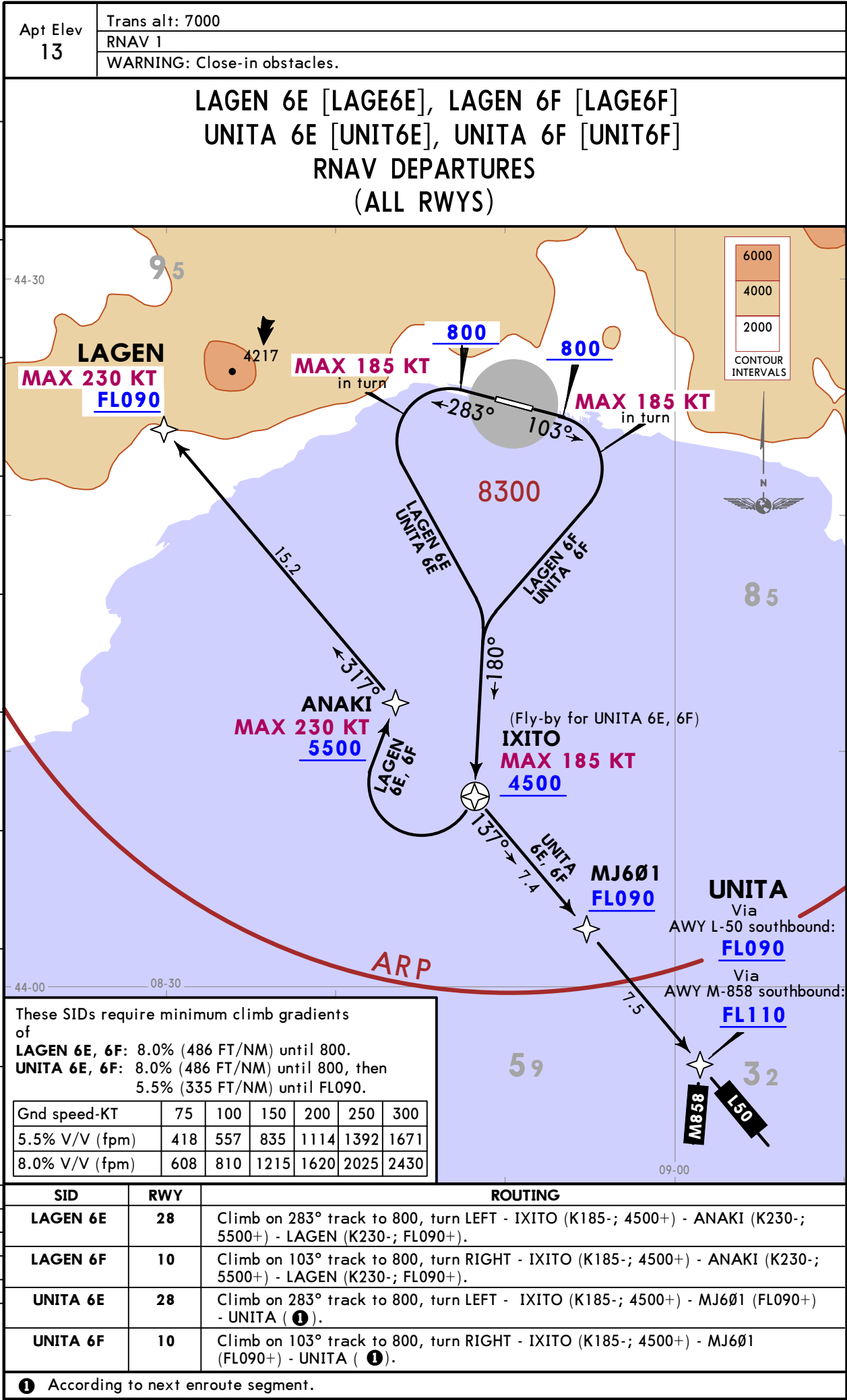


LIMJ/GOA
SESTRI

JEPPESEN
14 APR 23 (10-3A) Eff 20 Apr

GENOA, ITALY
RNAV SID



LIMJ/GOA
SESTRI

JEPPESSEN
10 JUN 22 10-3C Eff 16 Jun

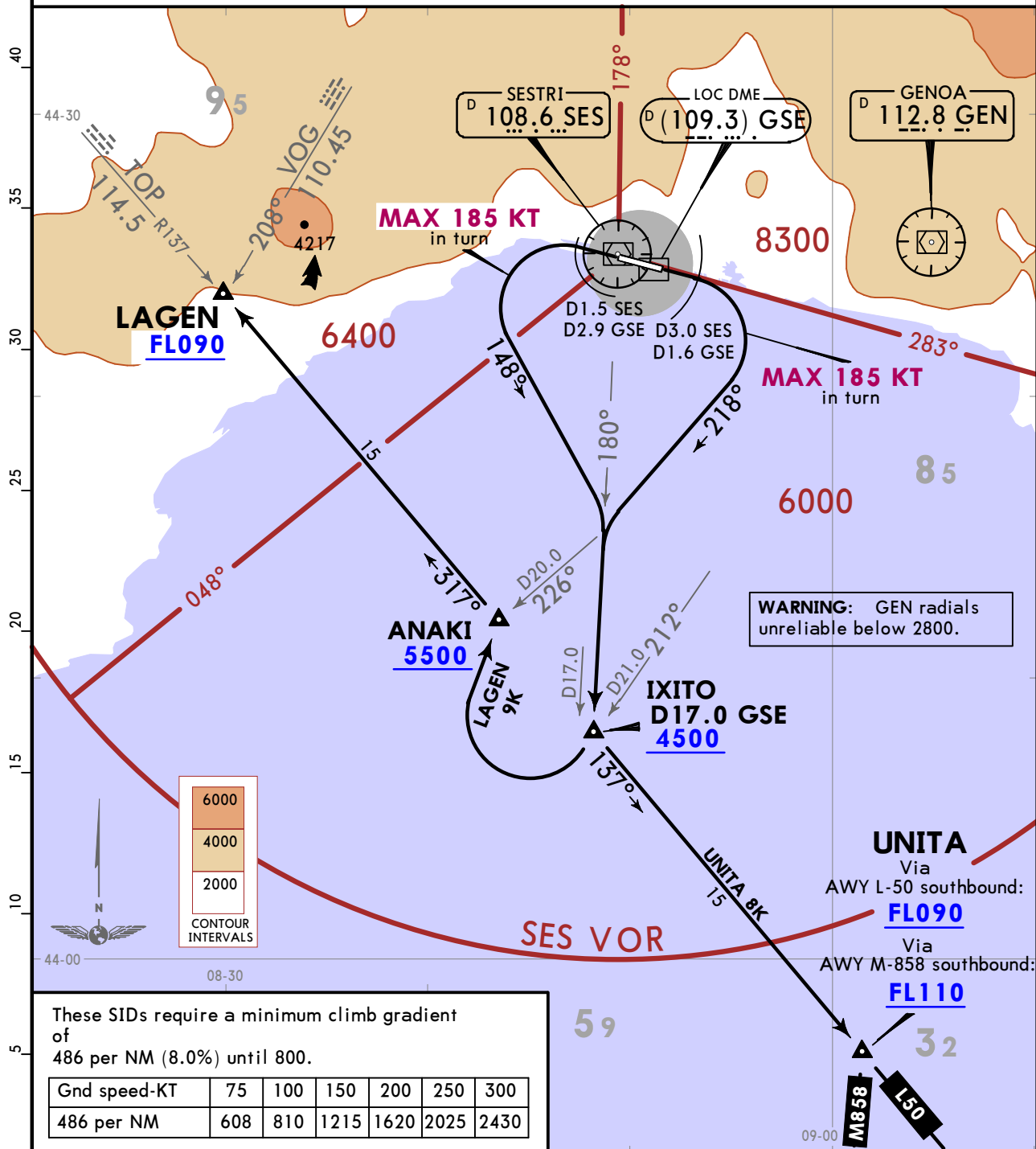
GENOA, ITALY
SID

GENOA Approach
119.6

Apt Elev
13

Trans alt: 7000
WARNING: Close-in obstacles.

LAGEN 9K [LAGE9K], UNITA 8K [UNIT8K]
DEPARTURES
(ALL RWYS)



RWY	INITIAL CLIMB
10	At D3.0 SES (D1.6 GSE) turn RIGHT, 218° track, intercept SES R180 to IXITO.
28	At D1.5 SES (D2.9 GSE) turn LEFT, 148° track, intercept SES R180 to IXITO.
RWY	ALTERNATE INITIAL CLIMB (when SES VOR unserviceable)
10	At D3.0 SES (D1.6 GSE) turn RIGHT, 198° track to IXITO.
28	At D1.5 SES (D2.9 GSE) turn LEFT, 167° track to IXITO.
SID	ROUTING
LAGEN 9K	At IXITO turn RIGHT to ANAKI, then to LAGEN. With ATC approval and provided aircraft has crossed 4500 climbing, turn RIGHT to ANAKI before reaching IXITO. Advise GENOA Approach.
UNITA 8K	At IXITO turn LEFT to UNITA.